

# MAPA GEOLÓGICO

ESCALA 1:25.000

## MONTEAGUDO

320-I  
(49-25)



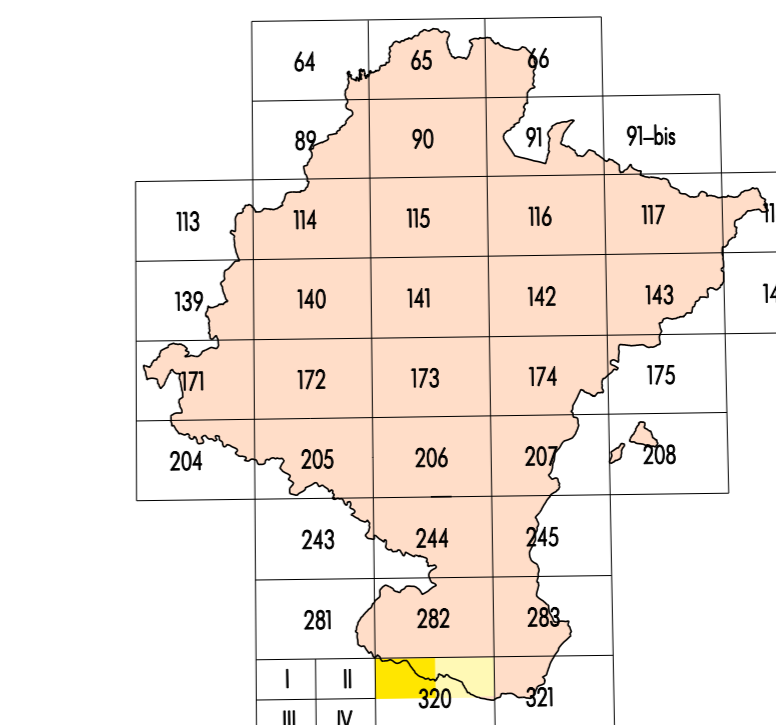
Departamento de Obras Públicas,  
Transportes y Comunicaciones

SERVICIO DE PROYECTOS, TECNOLOGÍA  
Y OBRAS HIDRAULICAS  
Sección de Geología y Geotecnia

MAPA GEOLÓGICO

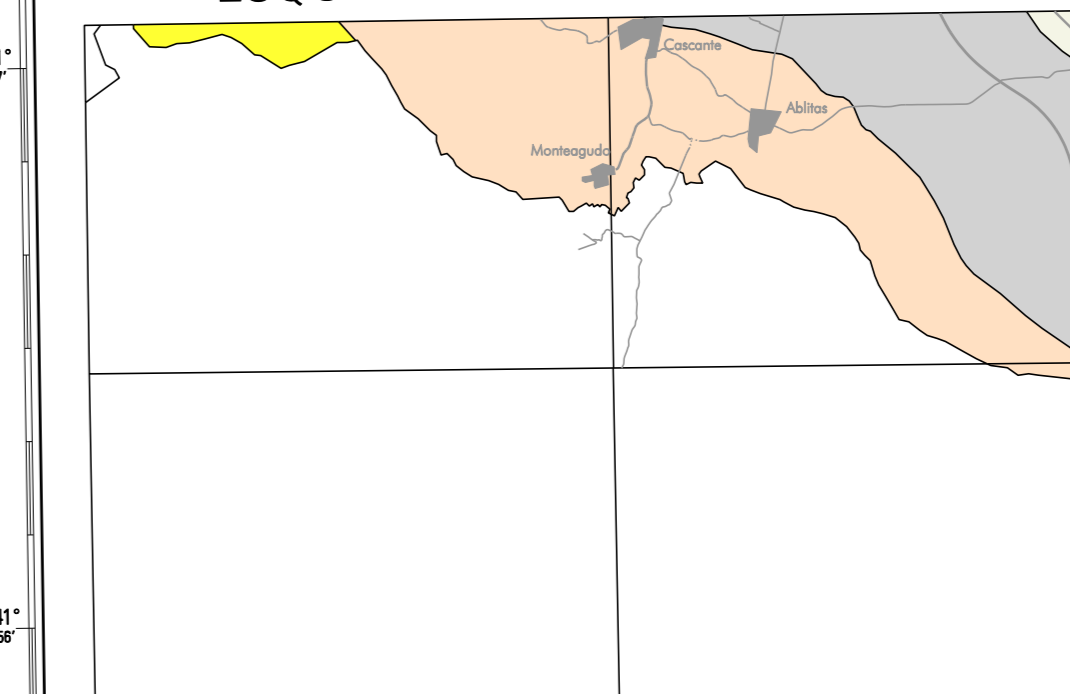
ESCALA 1:25.000

HOJA 320-I (MONTEAGUDO)



<table border="1"> <tr><td>300</td><td>301</td><td>302</td><td>303</td><td>304</td></tr> <tr><td>305</td><td>306</td><td>307</td><td>308</td><td>309</td></tr> <tr><td>310</td><td>311</td><td>312</td><td>313</td><td>314</td></tr> <tr><td>315</td><td>316</td><td>317</td><td>318</td><td>319</td></tr> <tr><td>320</td><td>321</td><td>322</td><td>323</td><td>324</td></tr> <tr><td>325</td><td>326</td><td>327</td><td>328</td><td>329</td></tr> <tr><td>330</td><td>331</td><td>332</td><td>333</td><td>334</td></tr> </table>	300	301	302	303	304	305	306	307	308	309	310	311	312	313	314	315	316	317	318	319	320	321	322	323	324	325	326	327	328	329	330	331	332	333	334	<table border="1"> <tr><td>300</td><td>301</td><td>302</td><td>303</td><td>304</td></tr> <tr><td>305</td><td>306</td><td>307</td><td>308</td><td>309</td></tr> <tr><td>310</td><td>311</td><td>312</td><td>313</td><td>314</td></tr> <tr><td>315</td><td>316</td><td>317</td><td>318</td><td>319</td></tr> <tr><td>320</td><td>321</td><td>322</td><td>323</td><td>324</td></tr> <tr><td>325</td><td>326</td><td>327</td><td>328</td><td>329</td></tr> <tr><td>330</td><td>331</td><td>332</td><td>333</td><td>334</td></tr> </table>	300	301	302	303	304	305	306	307	308	309	310	311	312	313	314	315	316	317	318	319	320	321	322	323	324	325	326	327	328	329	330	331	332	333	334	<table border="1"> <tr><td>300</td><td>301</td><td>302</td><td>303</td><td>304</td></tr> <tr><td>305</td><td>306</td><td>307</td><td>308</td><td>309</td></tr> <tr><td>310</td><td>311</td><td>312</td><td>313</td><td>314</td></tr> <tr><td>315</td><td>316</td><td>317</td><td>318</td><td>319</td></tr> <tr><td>320</td><td>321</td><td>322</td><td>323</td><td>324</td></tr> <tr><td>325</td><td>326</td><td>327</td><td>328</td><td>329</td></tr> <tr><td>330</td><td>331</td><td>332</td><td>333</td><td>334</td></tr> </table>	300	301	302	303	304	305	306	307	308	309	310	311	312	313	314	315	316	317	318	319	320	321	322	323	324	325	326	327	328	329	330	331	332	333	334	<table border="1"> <tr><td>300</td><td>301</td><td>302</td><td>303</td><td>304</td></tr> <tr><td>305</td><td>306</td><td>307</td><td>308</td><td>309</td></tr> <tr><td>310</td><td>311</td><td>312</td><td>313</td><td>314</td></tr> <tr><td>315</td><td>316</td><td>317</td><td>318</td><td>319</td></tr> <tr><td>320</td><td>321</td><td>322</td><td>323</td><td>324</td></tr> <tr><td>325</td><td>326</td><td>327</td><td>328</td><td>329</td></tr> <tr><td>330</td><td>331</td><td>332</td><td>333</td><td>334</td></tr> </table>	300	301	302	303	304	305	306	307	308	309	310	311	312	313	314	315	316	317	318	319	320	321	322	323	324	325	326	327	328	329	330	331	332	333	334	<table border="1"> <tr><td>300</td><td>301</td><td>302</td><td>303</td><td>304</td></tr> <tr><td>305</td><td>306</td><td>307</td><td>308</td><td>309</td></tr> <tr><td>310</td><td>311</td><td>312</td><td>313</td><td>314</td></tr> <tr><td>315</td><td>316</td><td>317</td><td>318</td><td>319</td></tr> <tr><td>320</td><td>321</td><td>322</td><td>323</td><td>324</td></tr> <tr><td>325</td><td>326</td><td>327</td><td>328</td><td>329</td></tr> <tr><td>330</td><td>331</td><td>332</td><td>333</td><td>334</td></tr> </table>	300	301	302	303	304	305	306	307	308	309	310	311	312	313	314	315	316	317	318	319	320	321	322	323	324	325	326	327	328	329	330	331	332	333	334
300	301	302	303	304																																																																																																																																																																															
305	306	307	308	309																																																																																																																																																																															
310	311	312	313	314																																																																																																																																																																															
315	316	317	318	319																																																																																																																																																																															
320	321	322	323	324																																																																																																																																																																															
325	326	327	328	329																																																																																																																																																																															
330	331	332	333	334																																																																																																																																																																															
300	301	302	303	304																																																																																																																																																																															
305	306	307	308	309																																																																																																																																																																															
310	311	312	313	314																																																																																																																																																																															
315	316	317	318	319																																																																																																																																																																															
320	321	322	323	324																																																																																																																																																																															
325	326	327	328	329																																																																																																																																																																															
330	331	332	333	334																																																																																																																																																																															
300	301	302	303	304																																																																																																																																																																															
305	306	307	308	309																																																																																																																																																																															
310	311	312	313	314																																																																																																																																																																															
315	316	317	318	319																																																																																																																																																																															
320	321	322	323	324																																																																																																																																																																															
325	326	327	328	329																																																																																																																																																																															
330	331	332	333	334																																																																																																																																																																															
300	301	302	303	304																																																																																																																																																																															
305	306	307	308	309																																																																																																																																																																															
310	311	312	313	314																																																																																																																																																																															
315	316	317	318	319																																																																																																																																																																															
320	321	322	323	324																																																																																																																																																																															
325	326	327	328	329																																																																																																																																																																															
330	331	332	333	334																																																																																																																																																																															
300	301	302	303	304																																																																																																																																																																															
305	306	307	308	309																																																																																																																																																																															
310	311	312	313	314																																																																																																																																																																															
315	316	317	318	319																																																																																																																																																																															
320	321	322	323	324																																																																																																																																																																															
325	326	327	328	329																																																																																																																																																																															
330	331	332	333	334																																																																																																																																																																															

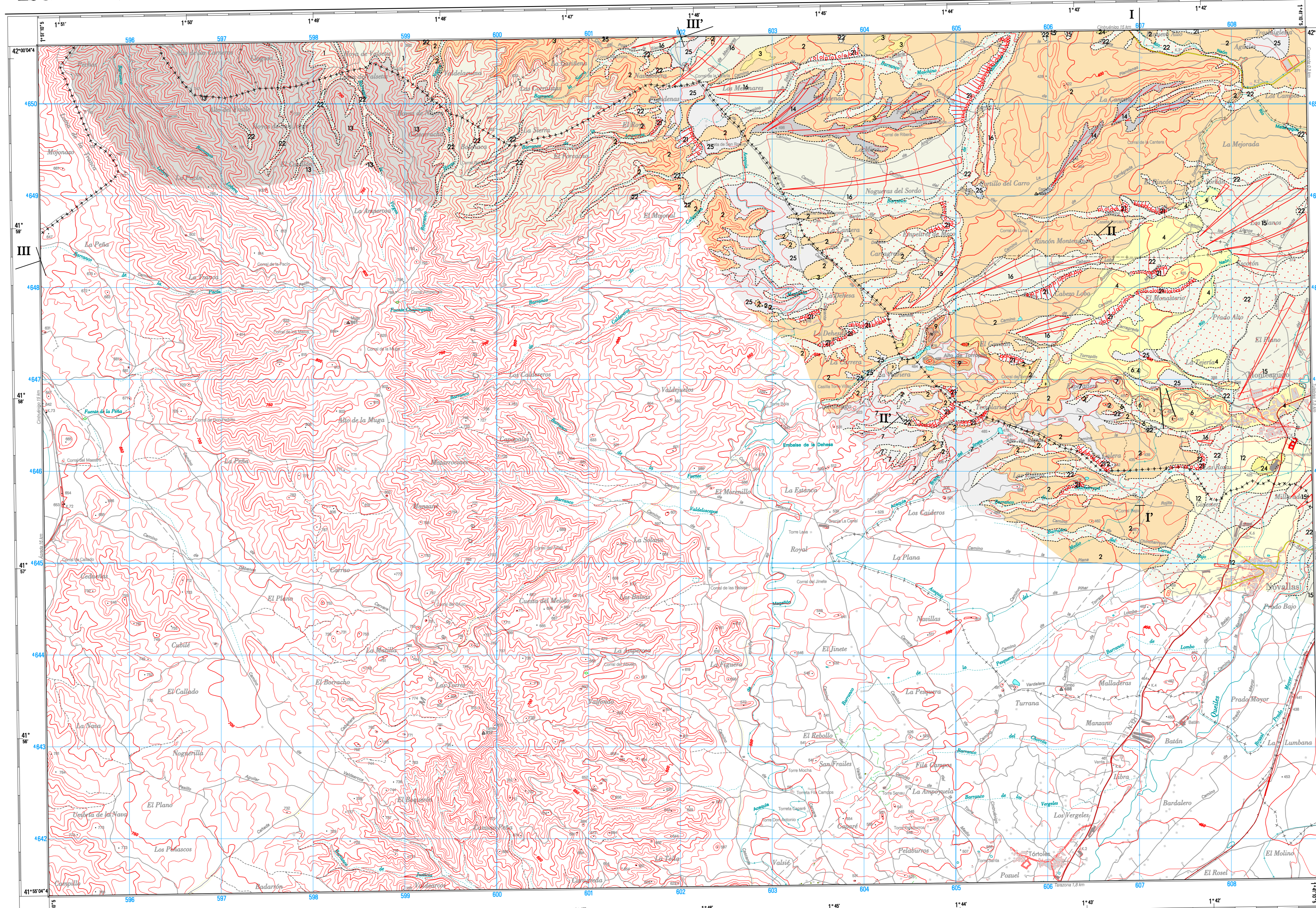
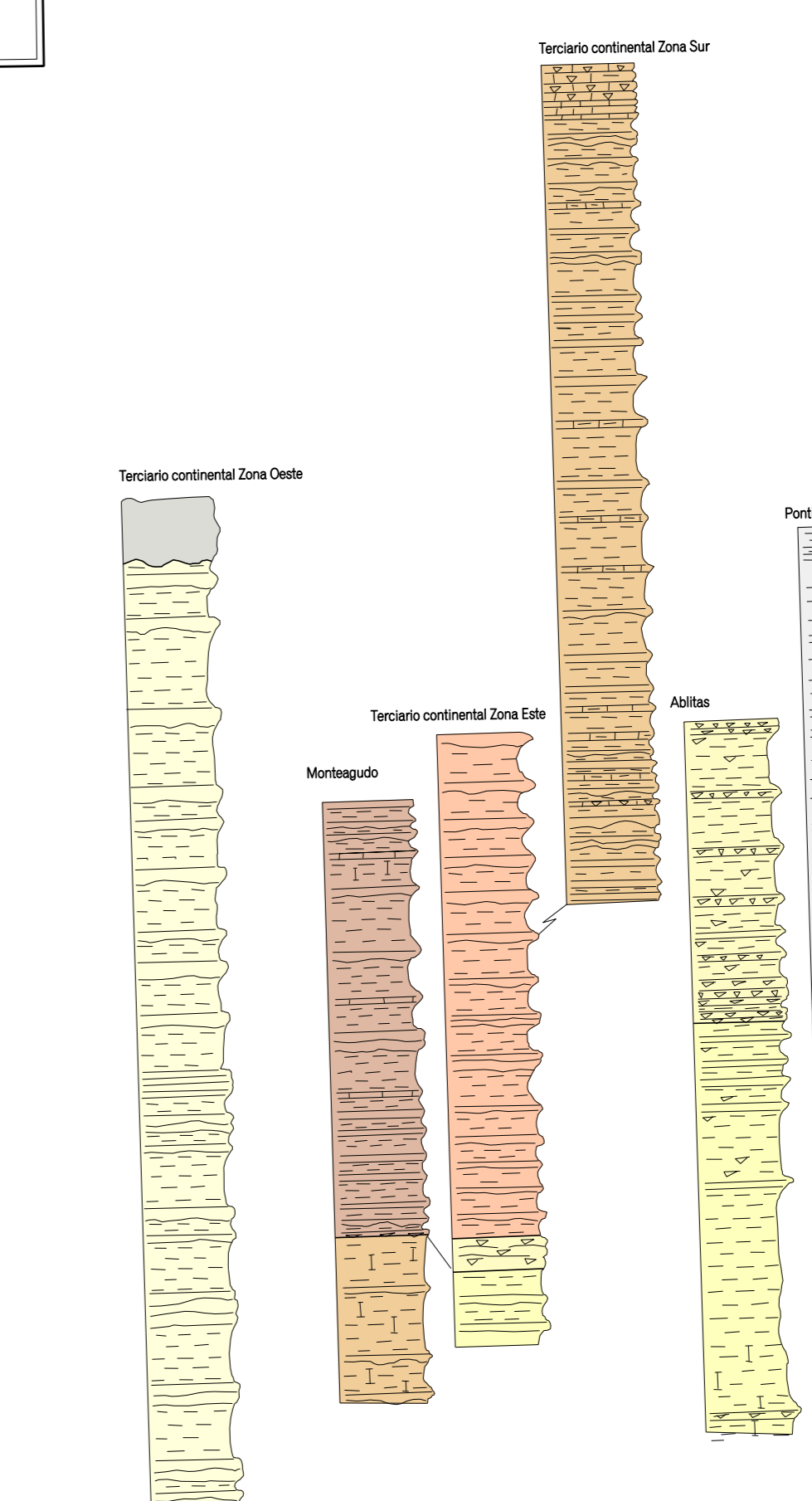
ESQUEMA GEOLÓGICO REGIONAL



Escala 1:200.000

<table border="1"> <tr><td>300</td><td>301</td><td>302</td><td>303</td><td>304</td></tr> <tr><td>305</td><td>306</td><td>307</td><td>308</td><td>309</td></tr> <tr><td>310</td><td>311</td><td>312</td><td>313</td><td>314</td></tr> <tr><td>315</td><td>316</td><td>317</td><td>318</td><td>319</td></tr> <tr><td>320</td><td>321</td><td>322</td><td>323</td><td>324</td></tr> <tr><td>325</td><td>326</td><td>327</td><td>328</td><td>329</td></tr> <tr><td>330</td><td>331</td><td>332</td><td>333</td><td>334</td></tr> </table>	300	301	302	303	304	305	306	307	308	309	310	311	312	313	314	315	316	317	318	319	320	321	322	323	324	325	326	327	328	329	330	331	332	333	334	<table border="1"> <tr><td>300</td><td>301</td><td>302</td><td>303</td><td>304</td></tr> <tr><td>305</td><td>306</td><td>307</td><td>308</td><td>309</td></tr> <tr><td>310</td><td>311</td><td>312</td><td>313</td><td>314</td></tr> <tr><td>315</td><td>316</td><td>317</td><td>318</td><td>319</td></tr> <tr><td>320</td><td>321</td><td>322</td><td>323</td><td>324</td></tr> <tr><td>325</td><td>326</td><td>327</td><td>328</td><td>329</td></tr> <tr><td>330</td><td>331</td><td>332</td><td>333</td><td>334</td></tr> </table>	300	301	302	303	304	305	306	307	308	309	310	311	312	313	314	315	316	317	318	319	320	321	322	323	324	325	326	327	328	329	330	331	332	333	334
300	301	302	303	304																																																																			
305	306	307	308	309																																																																			
310	311	312	313	314																																																																			
315	316	317	318	319																																																																			
320	321	322	323	324																																																																			
325	326	327	328	329																																																																			
330	331	332	333	334																																																																			
300	301	302	303	304																																																																			
305	306	307	308	309																																																																			
310	311	312	313	314																																																																			
315	316	317	318	319																																																																			
320	321	322	323	324																																																																			
325	326	327	328	329																																																																			
330	331	332	333	334																																																																			

COLUMNAS ESTRATIGRÁFICAS



LEYENDA

TIEMPO	MÁZCNO	CUATERNARIO	
		PLEISTOCENO	HOLOCENO
MÁZCNO	ARAGONENSE	1	2
	ASÉNENSE	3	4
		5	6

SIGNOS CONVENCIONALES

—	Contacto normal	15	Dirección y sentido de buzamiento
- - -	Contacto discordante		
- - - - -	Contacto entre unidades paraestratigráficas		
—	Falla		

DATOS PARA EL CENTRO DE LA HOJA  
Merced de la declinación magnética para el  
1 de Enero de 1989:  $\delta = 7^{\circ} 01'$  Oeste  
La declinación decrece cada año  $0,14''$   
Hacia 20. Convergencia de la cuadrícula  $\mu = 0^{\circ} 49' 22''$   
Factor de escala = 0,99973

1 : 25.000  
Escala Internacional Nacional (1:25.000) excepto los lugares está sujetos al sistema de unidades de medida de Greenwich  
Las alturas se refieren al nivel medio del Mediterráneo en Alicante (castellano) de las curvas de nivel de cada 10 metros.  
Las curvas topográficas se refieren al nivel medio del Mediterráneo en Alicante (castellano) de las curvas de nivel de cada 10 metros.  
Las curvas de nivel se refieren al nivel medio del Mediterráneo en Alicante (castellano) de las curvas de nivel de cada 10 metros.

Autores: A. García de Domingo (TECNA)  
D. Casas Gil (TECNA)  
Dirección Supervisor: E. Fdez. Paricio (Gobierno de Navarra)  
Coordinación Cartografía Digital: M. Jesús Larrinaga Sánchez (Gobierno de Navarra)  
Fecha de Edición: Año 2006

CORTES GEOLÓGICOS

