



**TELEDYNE OPTECH**  
Everywhere you look™

Part of the Teledyne Imaging Group



**NEW**

**6,500m AGL**  
**2,000,000 shots/second**

# Galaxy T2000

## Airborne Lidar

## Terrain Mapper

Maximum productivity for wide-area, mountain, urban and corridor survey applications

The new ALTM Galaxy T2000 is the ultimate wide-area lidar sensor, with best-of-class density performance and collection efficiency, delivering the highest quality data sets to meet rigorous USGS lidar standards. Now with a 6500 m AGL collection envelope and 2-MHz "on-ground" collection rate, Galaxy is quite simply the highest-performance sensor on the market in the smallest form factor for maximum application and platform flexibility.

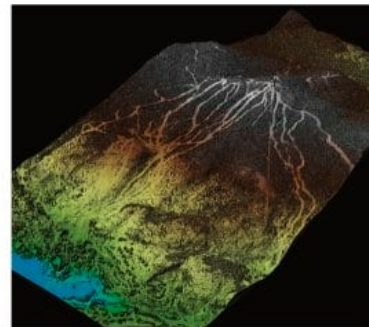
Whether gyro-stabilized or fixed-mounted, high-altitude or low, one camera or six, one Galaxy or two, the Galaxy T2000 excels in all application areas with unmatched configuration flexibility, while providing the highest data precision and accuracy available.



APPLICATIONS

- » Wide-area mapping
- » Urban mapping
- » Natural resource management
- » Engineering & infrastructure modeling
- » Powerline & transportation corridor

[www.teledyneoptech.com](http://www.teledyneoptech.com)



Continuous Operating Envelope



Increased Vertical Density



Seamlessly Integrated Cameras